

M0130

Edition 10.1

Issued on December 2011

IP Matrix

Operation Guide

For Version 10.x

No part of this manual, including the products and software described in it, may be reproduced, transmitted, transcribed, stored in a retrieval system, or translated into any language in any form or by any means, except documentation kept by the purchasers for backup purposes, without the express written permission of ILDVR Digital Technology USA Inc. (“ILDVR”)

Product warranty or service will not be extended if: (1) the product is repaired, modified, or altered, unless such repair, modification or alteration is authorized in writing by ILDVR; or (2) the serial number of the product is defaced or missing.

ILDVR PROVIDES THIS MANUAL “AS IS” WITHOUT WARRANTY OF ANY KIND, EITHER EXPRESS OR IMPLIED, INCLUDING BUT NOT LIMITED TO THE IMPLIED WARRANTIES OR CONDITIONS OF MERCHANTABILITY OR FITNESS FOR A PARTICULAR PURPOSE. IN NO EVENT SHALL ILDVR, ITS DIRECTORS, OFFICERS, EMPLOYEES OR AGENTS BE LIABLE FOR ANY INDIRECT, SPECIAL, INCIDENTAL, OR CONSEQUENTIAL DAMAGES (INCLUDING DAMAGES FOR LOSS OF PROFITS, LOSS OF BUSINESS, LOSS OF USE OR DATA, INTERRUPTION OF BUSINESS AND THE LIKE), EVEN IF ILDVR HAS BEEN ADVISED OR THE POSSIBILITY OF SUCH DAMAGES ARISING FROM ANY DEFECT OR ERROR IN THIS MANUAL OR PRODUCT.

SPECIFICATIONS AND INFORMATION CONTAINED IN THIS MANUAL ARE FURNISHED FOR INFORMATIONAL USE ONLY, AND ARE SUBJECT TO CHANGE AT ANY TIME WITHOUT NOTICE, AND SHOULD NOT BE CONSTRUED AS A COMMITMENT BY ILDVR. INACCURACIES THAT MAY APPEAR IN THIS MANUAL, INCLUDING THE PRODUCTS AND SOFTWARE DESCRIBED IN IT.

Products and corporate names appearing in this manual may or may not be registered trademarks or copyrights of their respective companies, and are used only for identification or explanation and to the owners’ benefit, without intent to infringe.

Copyright © 2011 ILDVR DIGITAL TECHNOLOGY USA INC all rights reserved.

To contact us:

Headquarter: www.ildvr.com

Branches

Europe: www.ildvr.eu

Russia: www.ildvrcom.ru,

China: www.ildvr.net

ILDVR Global Distribution & Service

Danmark: www.ildvr.dk

Germany: www.ildvr.de

Hungary www.ildvr.hu

Italy: www.ildvr.it

Netherland: www.ildvr.nl

Russia: www.il-dvr.ru

www.ildvr-video.ru

Ukraine: www.ildvr.com.ua

USA: www.ildvr-usa.com

Tech-support: support@ildvr.com

Directory

1. IP Matrix Introduction	1
2. IP Matrix Local Operation	2
3. IP Matrix Monitor Setup	3
3.1 Group Setup.....	5
3.2 Loop Setup (Switch).....	5
4. IP Matrix Monitor Control	7
4.1 Basic Operation.....	7
4.2 Change Split Viewing Mode.....	7
4.3 Change Display Group.....	8
4.4 PTZ Control.....	8

1. IP Matrix Introduction

IP Matrix is a kind of simple network client software. It supports 4-monitor outputs and each monitor can display 16 cameras at same time. If use switch viewing feature, it can support much more cameras in hundreds and thousands.

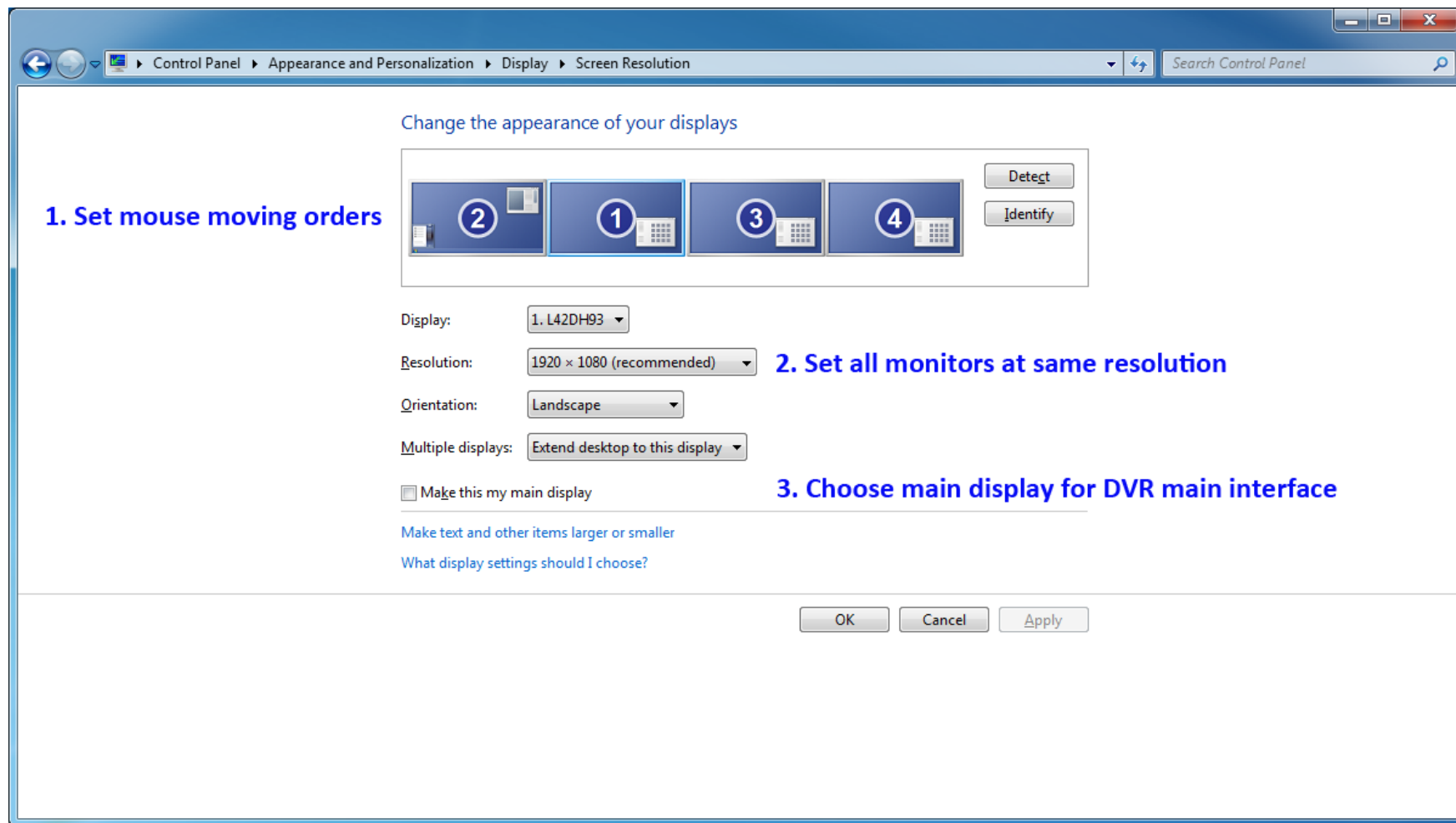
For IP Matrix software, the video server could be different type of software. Currently there are 5 software support IP Matrix. They are Hybrid DVR Server, Live Center, CMS Central Server, CMS E-map and CMS Client. One video server supports up to 6 IP matrix connections at same time.

The greatest advantage of IP Matrix is that it supports all kind of video resources, no matter of PC DVR, NetDVR and mega pixel cameras.

IP Matrix software has 2 typical usages:

- a. Construct IP Matrix TV-Wall in large scale surveillance system.
- b. Install together with other software to make multiple monitor outputs in small surveillance system.

If your IP Matrix computer installed dual-head display card or installed dual display cards and mounted with multiple monitors. Please enter Windows OS display settings to personalize the display appearance. See following illustration. After you finish multiple display configuration, IP Matrix software will auto detect how many local monitors could be used.

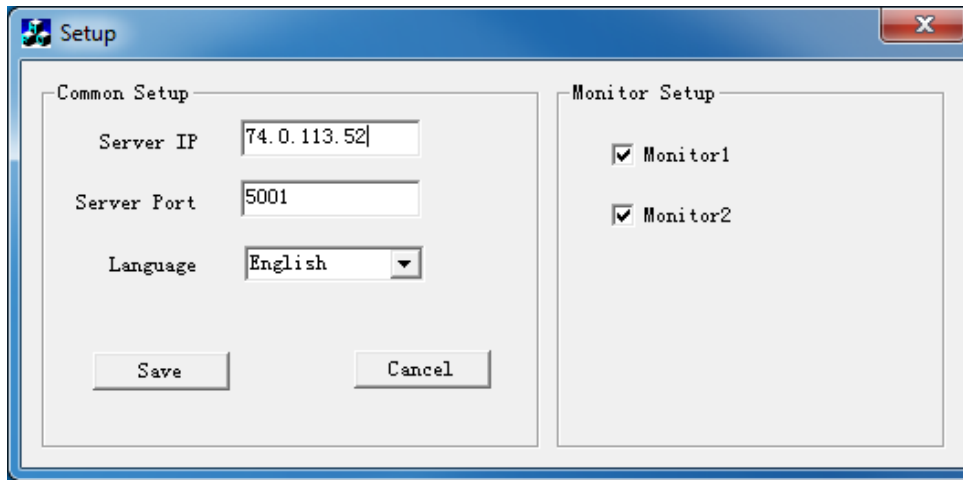


2. IP Matrix Local Operation

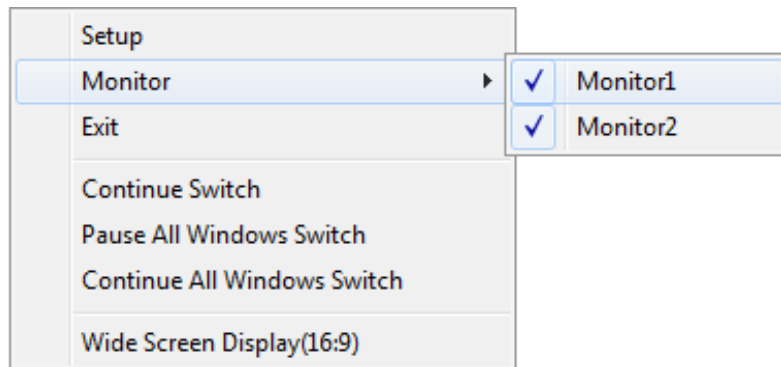
Firstly please be well known that the operation steps in section 2 are completed in IP matrix computer. The operation steps in section 3 and section 4 are completed in video server computer.

When you finish IP Matrix installation, the following diagram will pop up. Please input remote Server IP address and TCP port number then press “Save” button.

When Windows OS startup, IP Matrix will automatically start up and keep on top of the screen. If you want to exit this program, right-click screen then choose Exit. You can also exit program from taskbar icon by right-click and select Exit. If you want to disable its auto-start feature, please delete the shortcut from startup menu.



Check-off monitor1 to leave this monitor for other software if IP Matrix install together with other software, such as Live Center.



Right-click menu
Click “Setup” to change the Server IP address, port number and Language

3. IP Matrix Monitor Setup

Click “IP Matrix Setup” from right-click menu or system operation menu depending on different software to bring up following IP Matrix Setup interface.

IP Matrix Setup

System Para. Set

Listen Port

IP Matrix List

- 192.168.1.240
 - TV:1
 - TV:2
 - TV:3
- 192.168.1.249
 - TV:1

Delete Matrix

Add

Remove

Remove All

Setup

Save

Exit

Monitor List

Monitor Name	Matrix IP	TV No. in Matrix
192.168.1.240-TV:1	192.168.1.240	TV:1
192.168.1.240-TV:2	192.168.1.240	TV:2
192.168.1.240-TV:3	192.168.1.240	TV:3
192.168.1.249-TV:1	192.168.1.249	TV:1

3.1 Group Setup

“TV:1” is the primary monitor in IP Matrix. “TV:2” is the second monitor and so on “TV:3” , “TV:4”. To setup a matrix monitor, please choose one monitor in the Monitor List table then press Setup button to bring up following “Monitor Setup” interface (in next page). The illustration is showing a 4-split viewing monitor settings. You can set as many as 16 groups for each TV monitor.

Select a group from the drop-down list, name it and choose Split viewing mode. The changed group name will be activated after software restarted.

Drag & drop a camera to add-in it, double click it to remove it.

You can change the default stream type of each camera by click the Stream Type in every window. The other cameras you didn't change their stream type will be displayed as “Default Stream Type”.

3.2 Loop Setup

You can display more than one camera in one window by switch viewing. After you add multiple cameras in one window, please choose the switch interval for the window.

For your attention: The switch (loop) can be paused and continue only in IP Matrix local operation.

Monitor Setup

Device List

Monitor Name Group Group Name Split Mode

- 51
 - Aisle
 - StorageGate
 - Kichen
 - AnalogPTZ
 - SalesOffice
 - ManagerOffice**
 - Storage
 - Front Desk
 - Show Room (IP F
 - INC-MP20
 - MP13-Storage R
 - Show Room Aisle
 - INS-350B
 - INC-MP20V (Miar
 - INC-M2010P
- 55
 - CH 1
 - CH 2
 - CH 3
 - Test 4
- 58

Device Name	Camera	Stream Type
51	Aisle	Main
51	SalesOffice	Main

Device Name	Camera	Stream Type
51	StorageGate	Main

 *Drag & drop to add it*

 *Double-click to remove it*

Interval

Interval

Device Name	Camera	Stream Type
55	CH 1	Main

Device Name	Camera	Stream Type
51	Show Room Aisle	Main

Interval

Interval

Default Stream Type

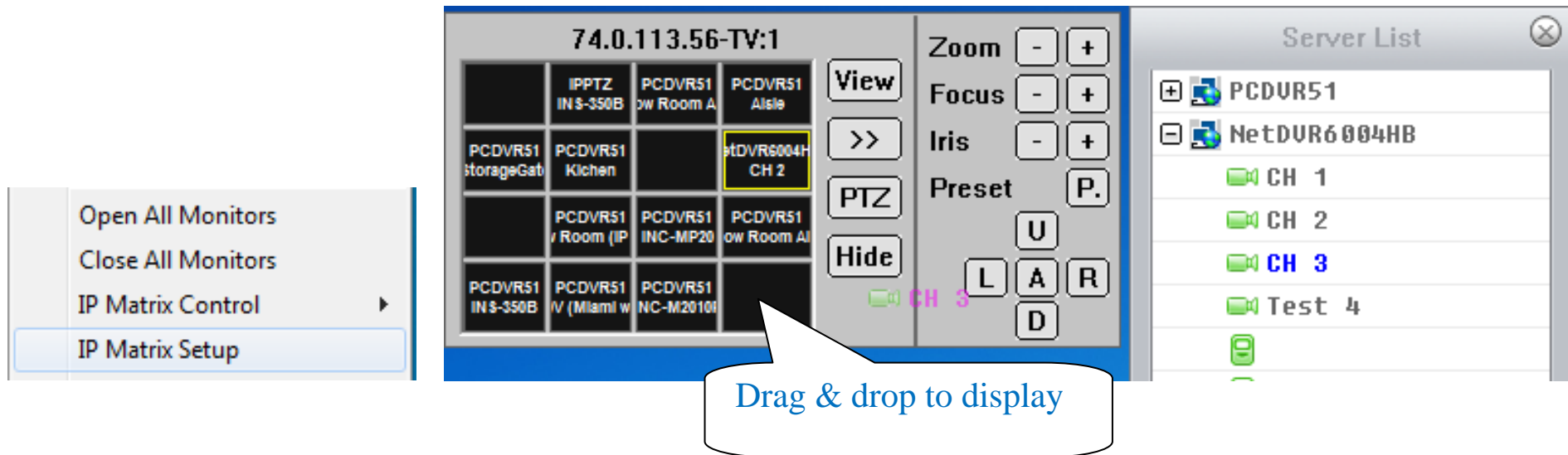
Save

Exit

4. IP Matrix Monitor Control

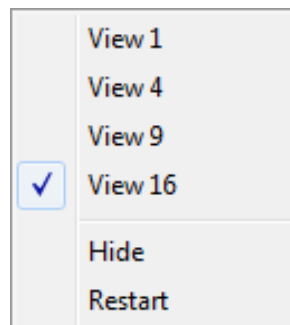
4.1 Basic Operation

Click “Open All Monitors” in system menu to view all monitors status connecting to the server system. The video server name and camera name show in the monitor windows. Click “Close All Monitors” in system menu or click **Hide** on monitor window to hide the monitor window. If you want to change the camera displaying window, just drag & drop the camera from server/camera list to target window.




4.2 Change Split Viewing Mode

Click **View** on monitor to bring up this menu:

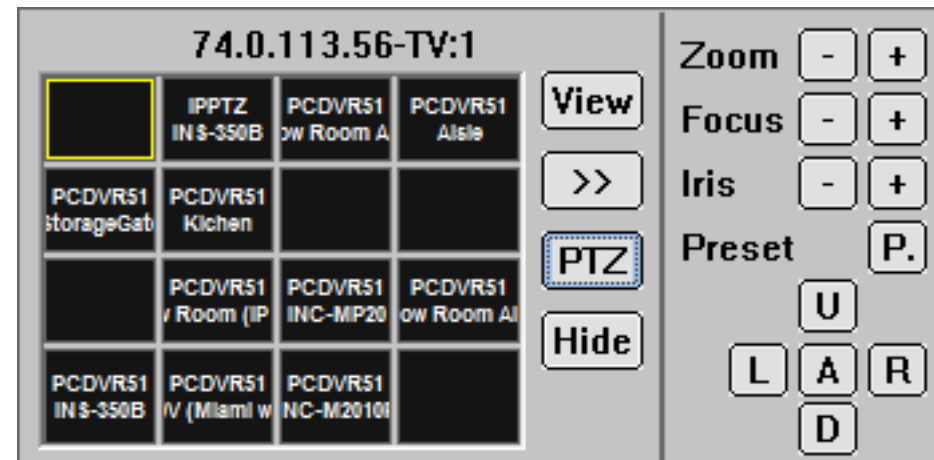


Adjust split viewing mode between 1, 4, 9 and 16.
Click “Hide” will close all video on the monitor of IP Matrix. Click “Show” to restore the video. The operation is similar to minimize the program.
Click “Restart” to reboot IP matrix computer.


4.3 Change Display Group

Click  on monitor window to open the group name list. Select one group to display on the monitor. The corresponding cameras' names will be displayed in the monitor window.

When you select "Close All", you will close all the groups. Then there will be no camera displayed on this monitor. The monitor windows will turn to black. But you can drag cameras from "Connection List" panel to monitor window to display. Or you can select a group name again to display.



4.4 PTZ Control

Click  on monitor window to bring up PTZ control panel.

PTZ can be controlled only when PTZ camera is selected. If there is more than one camera in a window for switch viewing, you cannot control PTZ. But you can drag & drop PTZ camera to a not-switching window to stop loop and then control PTZ. Preset Call is available but Preset Save is not available in current version.

Technical Support Information

Please fill in this form in order to get prompt technical service in case of an emergency.

Item	Description
Software Name	
Software Version	
Windows OS	<input type="checkbox"/> NT <input type="checkbox"/> 2000 <input type="checkbox"/> XP <input type="checkbox"/> 2003 <input type="checkbox"/> VISTA <input type="checkbox"/> WIN7
	<input type="checkbox"/> 32 bit <input type="checkbox"/> 64 bit
Computer hardware list	Mother board: CPU: Memory: Display card: HDD:
Purchasing date	
Dealer's Contact info	Company name: Technical Engineer: Tel: Fax: Email: